

ITEM 79. PARKING – NO PARKING – ELIZABETH STREET WATERLOO

TRIM RECORD NO: 2015/033819

RECOMMENDATION

It is recommended that the Committee endorse the allocation of parking on the eastern side of Elizabeth Street, Waterloo between the points 91.1 metres and 119.4 metres (four car spaces), south of McEvoy Street as “No Parking”.

DECISION

BACKGROUND

Development Consent Condition 38 of Development Application D/2013/70 requires the Developer of 810-822 Elizabeth Street, Waterloo to refer any traffic and parking changes on the street frontages to the Committee for consideration.

The traffic and parking arrangement plans are to be reviewed by the City before referral to the Committee for consideration.

COMMENTS

Parking along the frontages of 810-822 Elizabeth Street, Waterloo is currently a combination of “No Parking” and “No Stopping 4pm–6pm Mon-Fri”.

The parking restrictions in Elizabeth Street are proposed to maintain safe sight distances for vehicles exiting the new driveway proposed at the southern end of the development site.

CONSULTATION

The City has not consulted local residents and businesses as the proposed parking restrictions are Conditions of Development Consent.

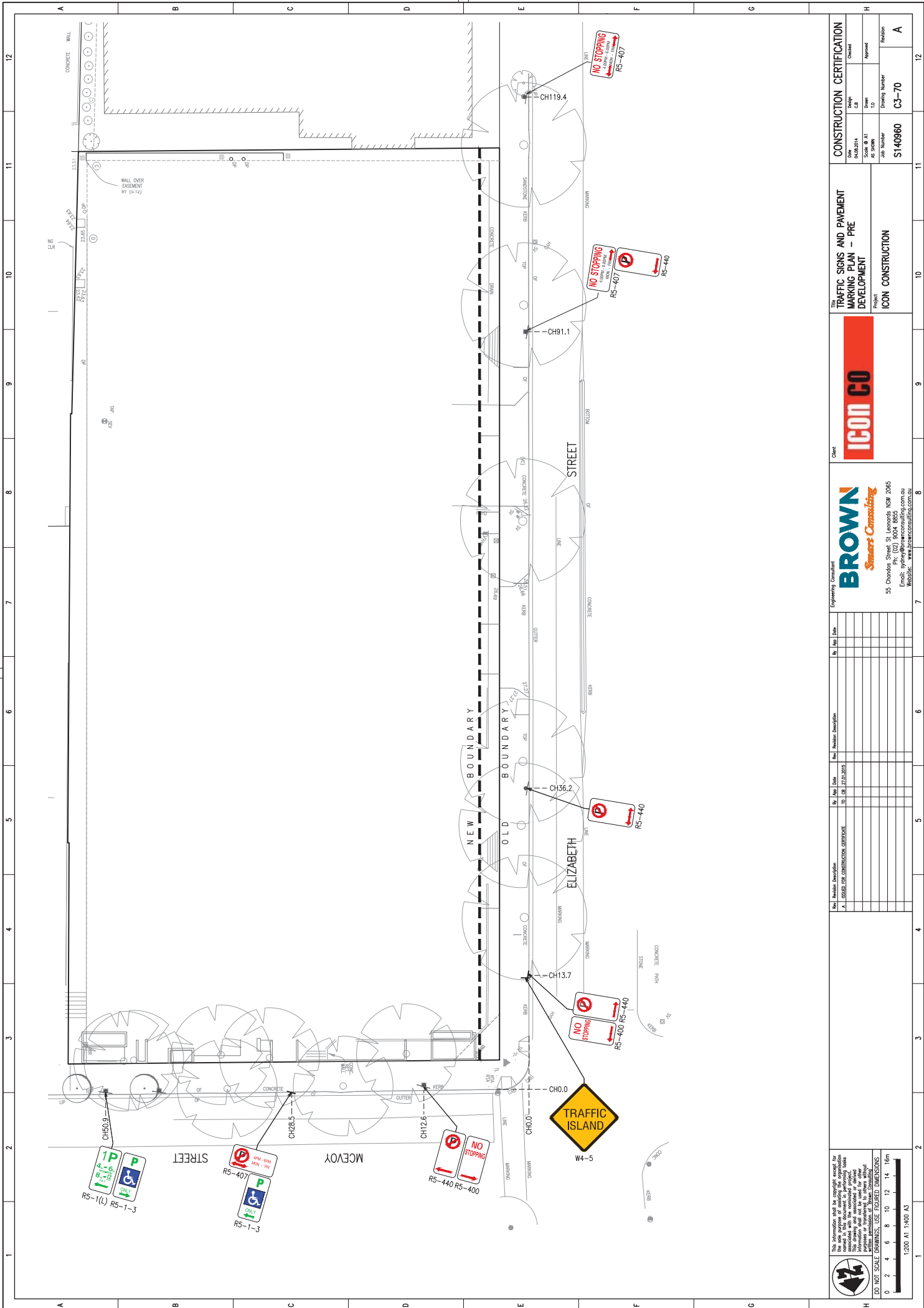
FINANCIAL

All cost associated with the proposal will be borne by the Developer.

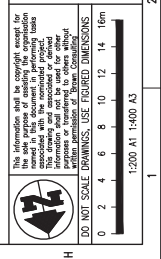
ATTACHMENTS

Parking – No Parking – Elizabeth Street Waterloo

Clement Lim – Senior Traffic Engineer



This information shall be copyright, except for those items in this document in performing tasks for the client. It is to be used for the purposes of the project only and is not to be used for any other purpose without the written consent of the client. DO NOT SCALE DRAWINGS. USE FIGURED DIMENSIONS.



Rev	Revision Description	By	Appr	Date
A	ISSUED FOR CONSTRUCTION CERTIFICATION			15 FEB 2015

Engineering Consultant

BROWN
Smart Consulting

55 Charles Street, St Leonards, NSW 2065
Ph: (02) 9004 9855
Email: sydney@brownconsulting.com.au
Website: www.brownconsulting.com.au

Client

ICON CO

Project

ICON CONSTRUCTION

TRAFFIC SIGNS AND PAVEMENT MARKING PLAN - PRE DEVELOPMENT

Drawn	Checked
AS SHOWN	AS SHOWN
Scale @ A1	Scale @ A1
Drawn 1:50	Checked 1:50
Job Number	Drawing Number
S1400960	C3-70
Revision	Revision
	A

CONSTRUCTION CERTIFICATION

Case No.	Project	Client
04/03/2014	ICON CO	ICON CO
Scale @ A1	Scale @ A1	Scale @ A1
AS SHOWN	AS SHOWN	AS SHOWN
Drawn 1:50	Checked 1:50	Checked 1:50
Job Number	Drawing Number	Revision
S1400960	C3-70	A

